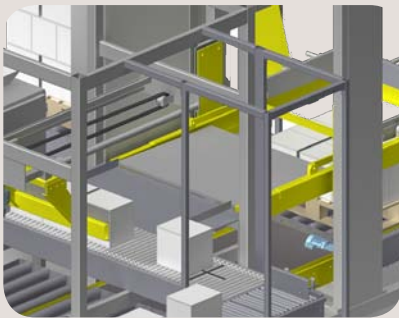


MK 6- B2 palletiser

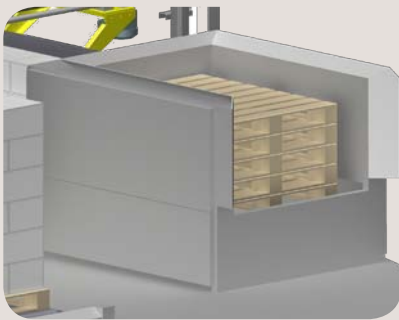


- Low cost fully automatic palletiser
- Up to 3 layers per minute

Built to Order

Our extensive product range includes palletisers for small jobs as well as for big turnkey projects. All machines are customer adapted, modular built, and will be tested with the customer's products before shipment. This is your guarantee for an optimal product.

All our machine types operate with the pallet types used as standard today. We palletise products from more than 30 different industries, any volume of a given product per minute and up to 10 layers per minute per machine.

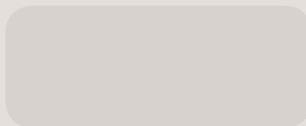
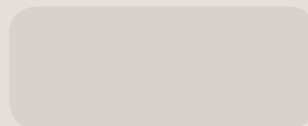


Craftsmanship & Quality

For decades we have with pride delivered solutions based on strong craftsmanship and quality, all represented in our name and logo. The strong craftsmanship means that our customers get well proven solutions that have been thoroughly developed and tested for very high efficiency - and still easy to maintain.

Specs

Capacity:	Up to 3 layers/min
Max full pallet height:	1800 mm incl. pallet+product height
Infeed height:	850 -1000 mm
Outfeed height:	400 mm



PALLETISERS	MK1	MK2	MK3	MK6	MK7	MK8	MK9
Capacity							
Layers per minute	1	3-5	4-6	3	4	3,5	10
Number of pallet patterns	25	100	100	100	100	100	100
Standard Features							
Operational panel 6"	•						
Operational panel 10" moveable		•	•	•	•	•	•
Low load	•	•	•	•	•	•	
Pallet track height 400-600 mm	•	•	•	•	•	•	•
Euro pallets 800 x 1200 mm	•	•	•	•	•	•	•
Chep pallets 1000 x 1200	•	•	•	•	•	•	•
Fully automatic infeed of empty pallets		•	•	•	•	•	•
Mechanical side & front guide loading frame	•						
Pneumatic, manually adjustable side & front guides		•	•	•	•		•
Fully automatic, pneumatic side & front guides						•	
Options							
Sheet dispenser, sheets between layers	•	•	•	•	•	•	•
Sheet dispenser, sheets between layers & sheets on empty pallet	•	•	•	•	•	•	•
High load		•	•		•	•	•
Label orientation	•	•	•	•	•	•	•
Pneumatic, manual side guides on loading frame	•						
Motorized front guides on loading frame	•						
High load up to 6 layers per minute		•	•		•		•
High load up to 10 layers per minute							•
Liftable arm 1		•	•	•	•	•	•
1/2 pallets 800 x 600 mm	•	•	•	•	•	•	•
1/2 pallets 1000 x 600 mm	•	•	•	•	•	•	•
1/4 pallets 400 x 600 mm	•	•	•	•	•	•	•
Drop safety device	•	•	•	•	•	•	•

MK1
Only little space demanding
Up to 1 layer per minute

MK2
Compact in-line system
From 3-5 layers per minute

MK3
High operational flexibility
From 4-6 layers per minute

MK6
Low cost fully automatic palletiser
Up to 3 layers per minute

MK7
Specialized for 1 kilo bags with high capacity
Very careful product handling
Up to 4 layers per minute

MK8
Multi-palletiser handling products from up to four different lines with high capacity
Very compact and only little space demanding.
Up to 3½ layers per minute

MK9
High speed palletising
Up to 10 layers per minute

Visit us at:
www.dan-palletiser.com



Headquarter:
DAN-Palletiser A/S
Borgergade 17
DK-4241 Vemmelev
Denmark
Tel +45 5838 2193
Fax +45 5838 2826