

World Leader in Sophisticated Packaging Systems**AT4E22** Automatic Top and Bottom Drive Four Edge Carton Sealer**series overview**

The BestPack® AT SERIES operator free, four outer edge carton sealing machines, using pressure sensitive tape. These machines are designed to eliminate costly hand taping of the four outer edges where pilfer proofing and protection of your product from outside environment is necessary. The AT model is designed for uniform edge sealing applications

The units are designed with an automatic 90° box turner. The AT4E edge sealers require 80 PSI and 10 CFM of air, and standard 110V 60 CPS, single phase current. (Unless otherwise specified at time of order.)

major features

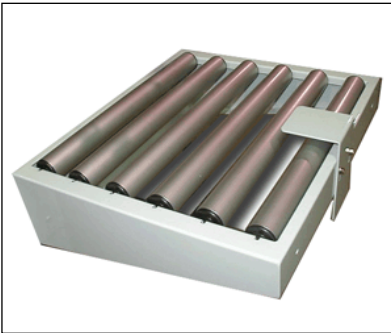
- *Rugged Construction*
- *Operator Free Design*
- *Height/Width Adjustments on either side of Machines*
- *Tape Roll Lengths: 1000 yd., 1500 yd., 2000 yd.*
- *Heavy Duty Frame*
- *UL Approved Electrical Parts*
- *Designed for Uniform Carton Sizes*
- *2" Tape Head Available*

standard features

- *Patented Brushing System for even application of tape.*
- *Four Pop out Pressure Sensitive Tape Heads with patented tab adjustment*
- *Locking Heavy-duty Casters/or Pegs.*
- *Bottom Tape Air Blowers*
- *Four Belt Drive*
- *90° Box Turner*
- *Low Tape Sensor and Warning Light*
- *Maintenance Free, Oil-Less Air Cylinders*
- *Instruction Manual/ Parts Kit*

World Leader in Sophisticated Packaging Systems**optional features**

- *Low Tape Sensor*
- *No Tape on Carton Sensor*
- *Motorized Height and/or Width Adjustment*
- *Stainless Steel*

**Infeed/Exit Conveyor w/ Stabilizer****machine & carton specifications**

- *Power Requirements: 110 Volts 60 CPS Single Phase Current*
- *Air Requirements: 80 PSI, 10 CFM*
- *Speed: Up to 6 cartons/minute*
- *Tape Head: Standard: 3"; Available: 2"*

series comparison table

Model	Machine Size	Carton Range	Cartons/Min.
AT4E 22-3 3" TapeHead	(98.43") x (53.15") x (67.32")	(11.81" - 23.62") x (9.84" - 23.62") x (9.84 - 23.62")	Up to 6

* All specifications capable of customization